

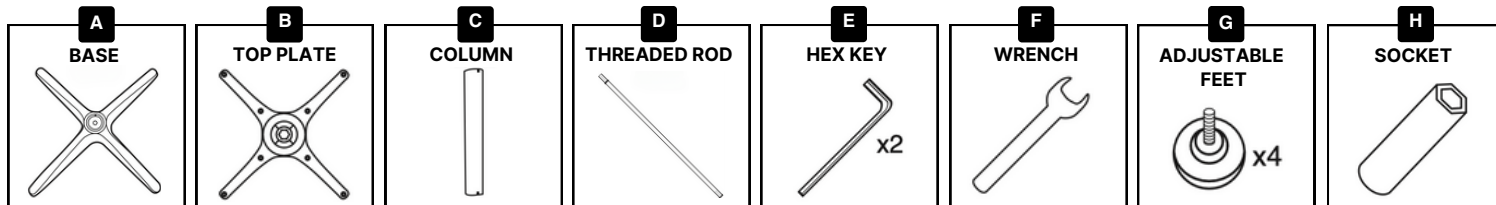
# ASSEMBLY GUIDE

## AIDA TABLE BASE

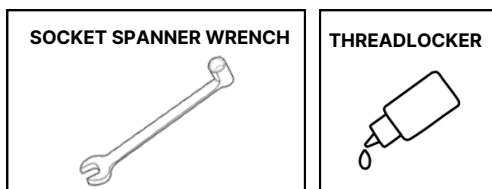
### INSTRUCTIONS:

- Use a spanner to maximise bolt tightening. Maintain a secure bond and prevent loosening with a medium strength threadlocker. For a longer-lasting and more firm assembly we recommend adding one drop of threadlocker to each hex nut.
- If assembled incorrectly or not according to the assembly instructions, the product warranty will be voided.

### PARTS INCLUDED:

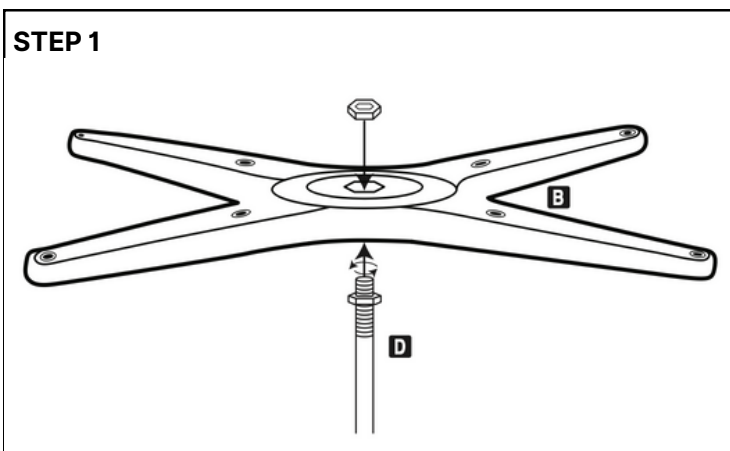


### TOOLS REQUIRED (NOT INCLUDED):

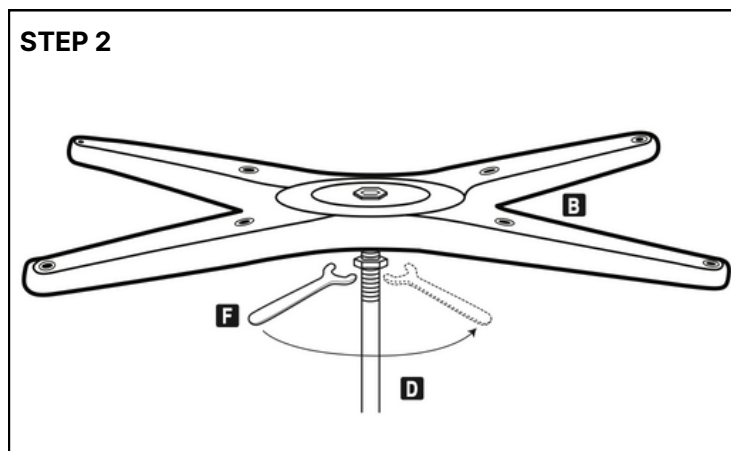


### ASSEMBLY INSTRUCTIONS:

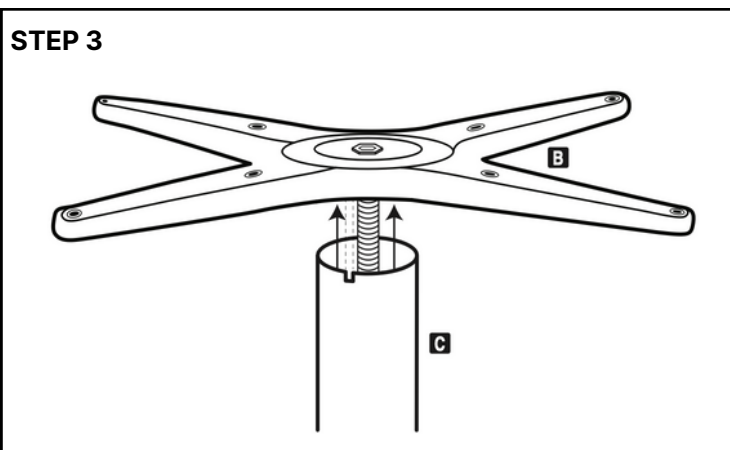
#### STEP 1



#### STEP 2



#### STEP 3



#### STEP 4

